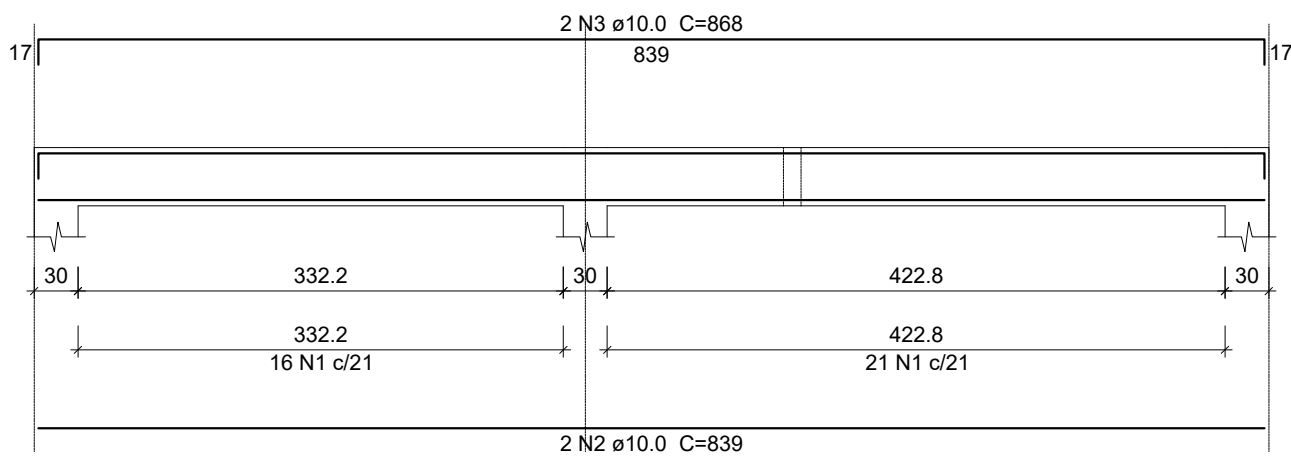
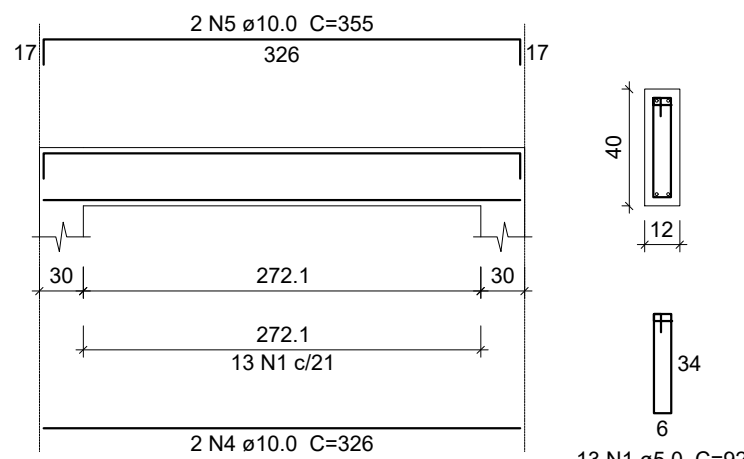


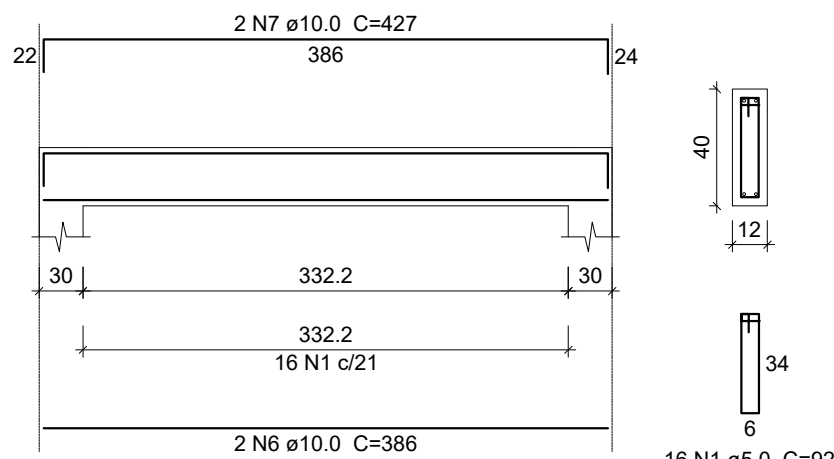
V1



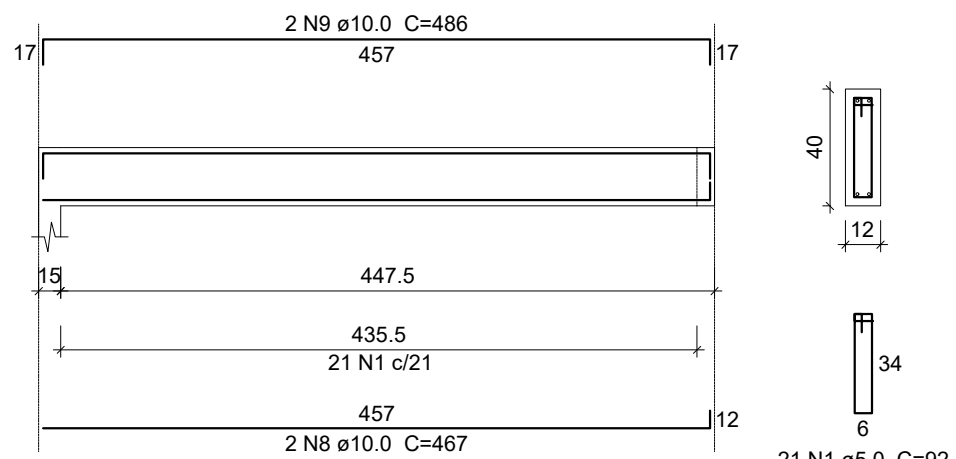
V2



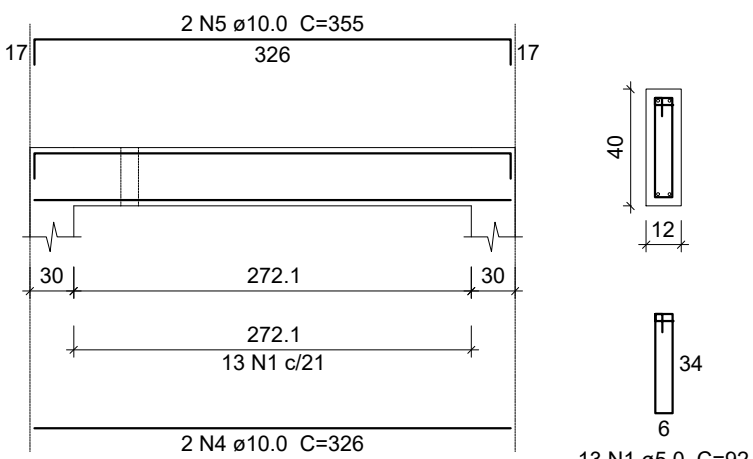
V3



V4



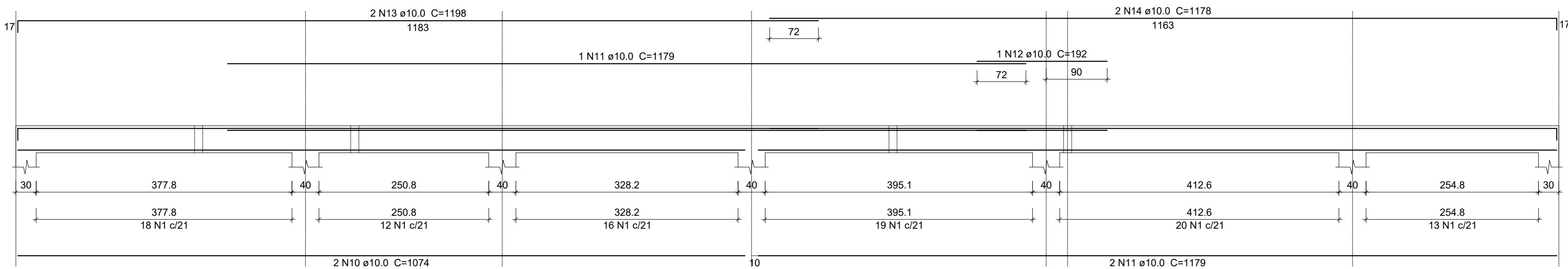
V5



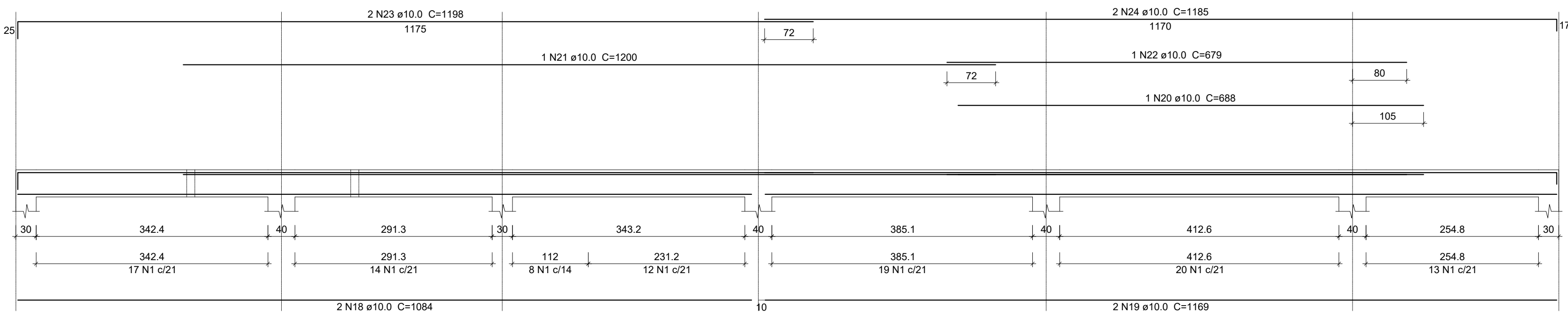
Relação do aço

Relação do aço					
AÇO	N	DIAM	Q	UNIT (cm)	C.TOTAL (cm)
CA60	1	5.0	657	92	60444
CA50	2	10.0	2	839	1678
	3	10.0	2	868	1736
	4	10.0	4	326	1304
	5	10.0	4	355	1420
	6	10.0	2	386	772
	7	10.0	2	427	854
	8	10.0	2	467	934
	9	10.0	2	486	972
	10	10.0	2	1074	2148
	11	10.0	3	1179	3537
	12	10.0	1	192	192
	13	10.0	2	1198	2396
	14	10.0	2	1178	2356
	15	10.0	2	482	964
	16	10.0	1	132	132
	17	10.0	2	543	1086
	18	10.0	2	1084	2168
	19	10.0	2	1169	2339
	20	10.0	1	688	688
	21	10.0	1	1200	1200
	22	10.0	1	679	679
	23	10.0	2	1198	2396
	24	10.0	2	1185	2370
	25	10.0	2	739	1478
	26	10.0	1	152	152
	27	10.0	2	778	1556
	28	10.0	2	1111	2222
	29	10.0	2	225	450
	30	10.0	2	1158	2316
	31	10.0	2	1109	2218
	32	10.0	2	1147	2294
	33	10.0	2	183	366
	34	10.0	2	221	442
	35	10.0	2	184	368
	36	10.0	2	222	444
	37	10.0	2	724	1448
	38	10.0	2	754	1508
	39	10.0	2	467	934
	40	10.0	2	498	996
	41	10.0	2	799	1598
	42	10.0	2	828	1656
	43	10.0	2	376	752
	44	10.0	4	405	1620
	45	10.0	2	592	1184
	46	10.0	2	621	1242
	47	10.0	2	219	438
	48	10.0	2	238	476
	49	10.0	2	222	444
	50	10.0	2	260	520
	51	10.0	4	395	1580
	52	10.0	2	428	856
	53	10.0	1	230	230

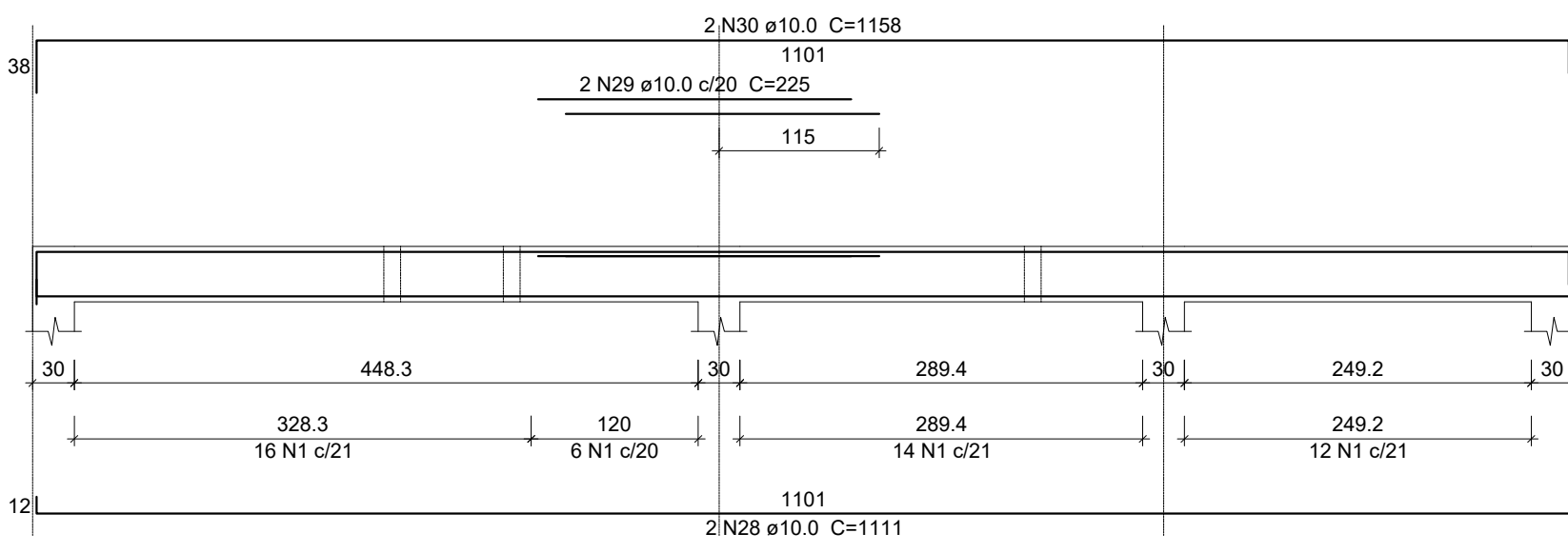
V6



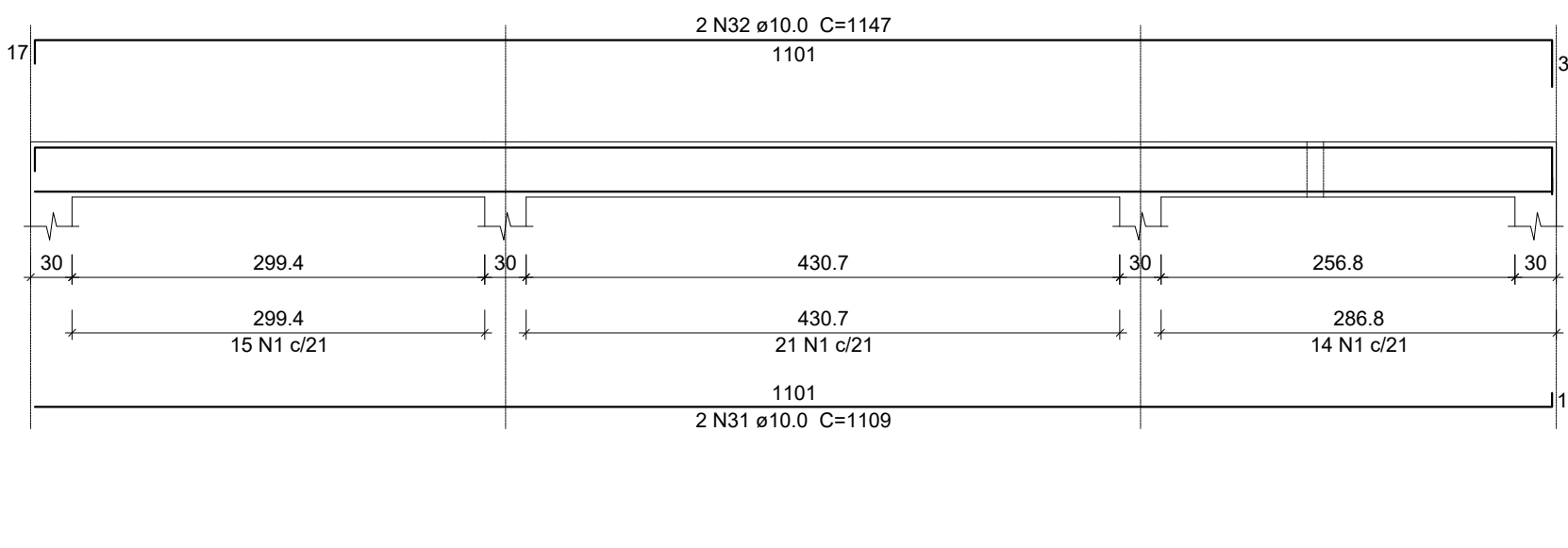
V7



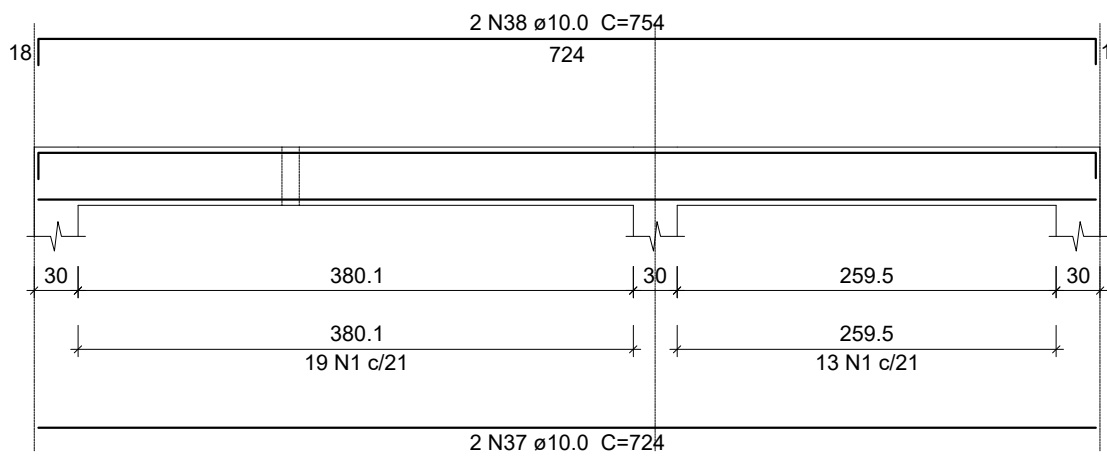
V8



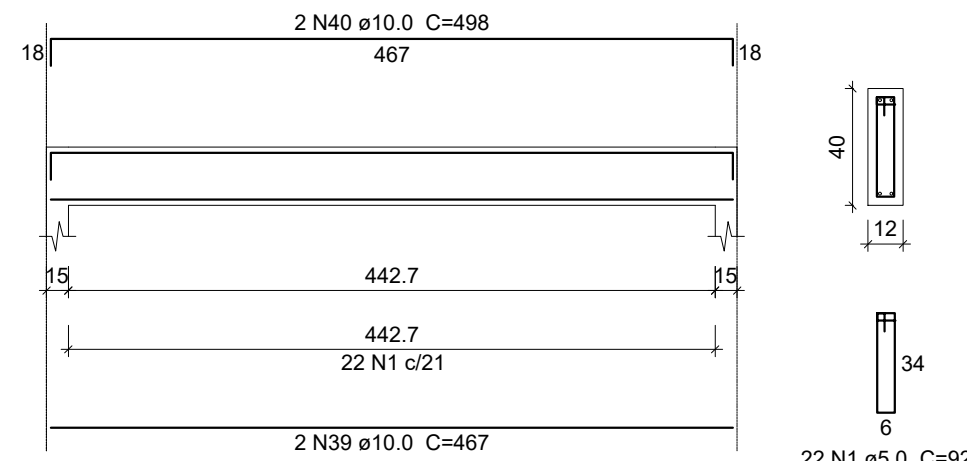
V11



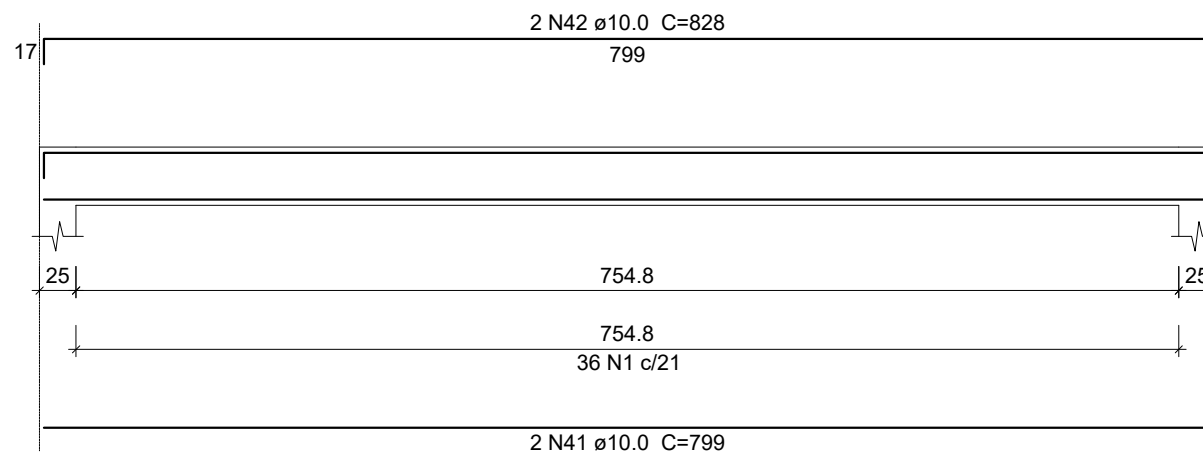
V12



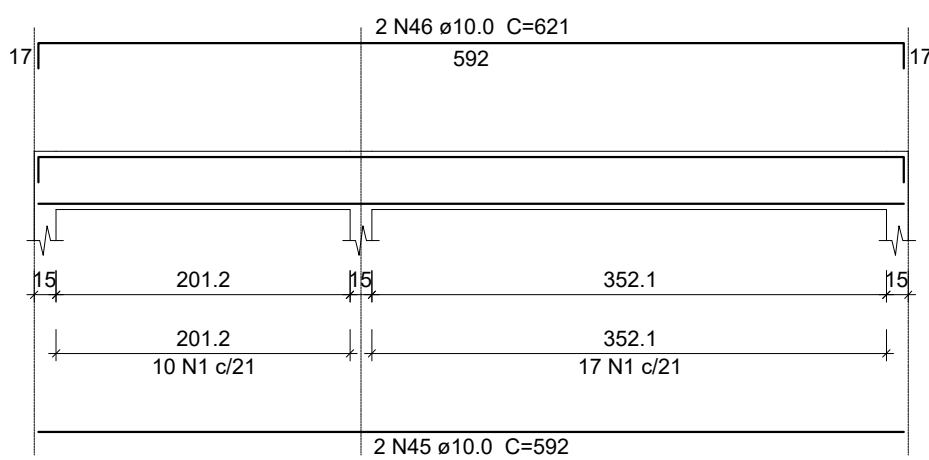
V14



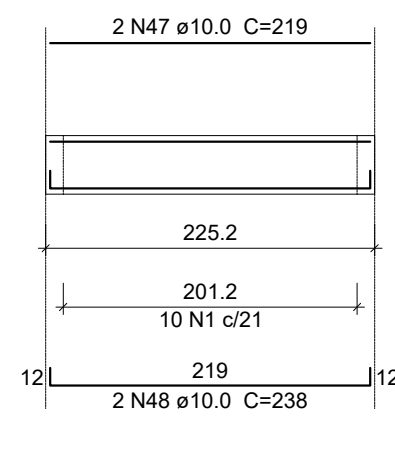
V16



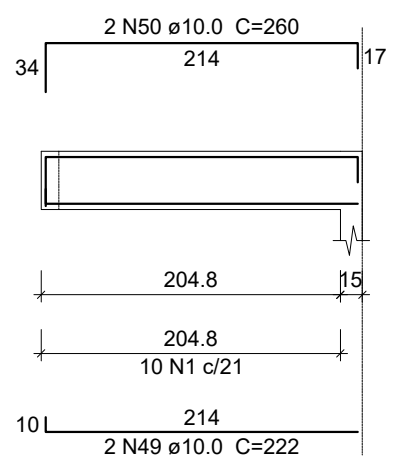
V18



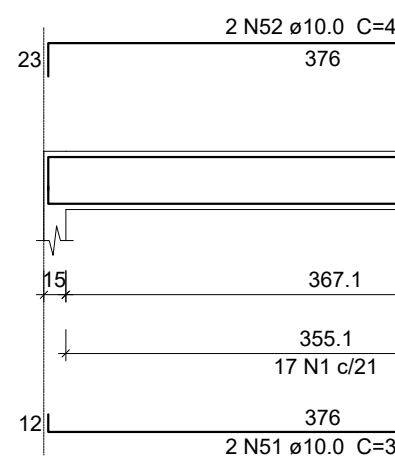
V19



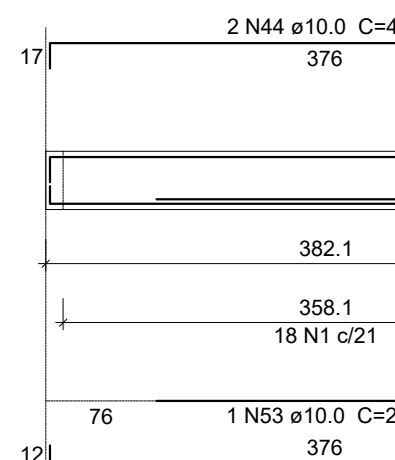
V20



V21



V22



Resumo do aço

AÇO	DIAM	C.TOTAL (m)	PESO + 10% (kg)
CA50	10.0	661.1	448.3
CA60	5.0	604.5	102.5
PESO TOTAL			
CA50	448.3		
CA60	102.5		

Vol. de concreto total (C-25) = 7.16 m³
Área de forma total = 137.33 m²

PREFEITURA DE SÃO JOSÉ
DO VALE DO RIO PRETO - RJ

ECONSTRUT CONSTRUÇÕES EIRELI.

Estrada Silveira da Motta, Parada Morelli
S. J. Vale do Rio Preto - RJ
CEP: 25780-000

Obra: UNIDADE BÁSICA DE SAÚDE - BARRINHA

Projeto: PROJETO ESTRUTURAL

Disciplina: DETALHES VIGAMENTO TERREO - PARTE 01

Escritório Responsável: ABBM BRAGA - COMÉRCIO E SERVIÇOS LTDA

Responsável Técnico: BRUNO TELES NEVES- CREA 2015105127

Fiscalização e Supervisão:

Escala: INDICADA

Data: JAN/2023

Prancha:

07/09